



MYSTERY BASKET CHALLENGE

QUICKSTART SHEET

See last page of this guide for COVID-19 safety suggestions.

DESCRIPTION

Two chefs square off against each other in this competition inspired by the popular show *Chopped*. These culinary masters will compete to create a dish using the ingredients provided in a picnic basket, with a small set of complementary products available in common. The dishes will be cooked in front of a live audience and judged by a panel of campus “celebrities” or randomly selected students.

1 TIMING

This event can be held on a single evening during your **Dueling Dishes** promotion, but if interest and participation are high, it can be held multiple times over your promotion period.

2 MENU

The basket ingredients should be chosen by another Sodexo staff member without input from the competing chefs. Typically, these ingredients are chosen with whimsy and incongruity in mind. The dishes are then invented and prepared within a specific time limit.

3 TOOLS

To promote your Mystery Basket Challenge, use the following materials:

4 ENHANCEMENTS

Host

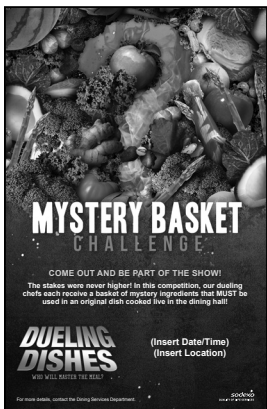
Ask a Campus Intern or another student volunteer to serve as host for your event. They should be personable and able to comment on the action, while interviewing members of your audience about what they think of the chefs’ work in progress. The host will also interview the judges and compile their votes.

Décor

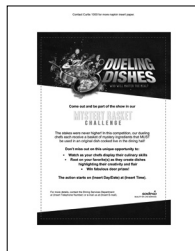
To help you make your **Dueling Dishes** promotion a huge success, consider using spotlights, mobile kitchen stations and a large clock that counts down the time.

Suggested Door Prizes

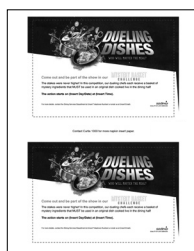
- T-Shirts
- Cookbooks
- Meal Credit
- Gift Certificates



TIME/DATE POSTER



LARGE NAPKIN



SMALL NAPKIN



Small and large napkins are desktop printer friendly (8.5 x 11) this year. Contact Sodexo Print Management (Curtis 1000) to order.

Visit the **Universities Marketing page on Sodexo Net** to access the **Resident Dining Promotions Link** and find **Additional Promotions Marketing Templates** to promote your **Dueling Dishes** event.

5

STEP-BY-STEP

General Instructions

- To host your Mystery Basket Challenge, you'll need the following items:
 - Non-latex gloves
 - Hairnets, chef's hats, aprons or **Dueling Dishes** T-Shirts
 - Volunteer host
 - Standard kitchen and food preparation equipment
 - Food supplies in sufficient quantities
 - Two picnic baskets

Note: *All standard Sodexo safety and preparation guidelines must be followed during the event. The final product made by the participants should only be made available for consumption if the managing chef has closely monitored its preparation and subsequently approves of it being served.*

- Any ingredients that require special preparation for safe consumption should be prepared prior to the event; packaged ingredients are best.
- Acquire a microphone and loudspeaker for your event host to use for commentary and interviews to keep things lively.
- Acquire door prize raffle tickets and distribute them.
- Determine how much space in your dining location your event will require. Make sure the area that you choose does not interfere with your serving line or other high traffic areas in your dining area.

Activity Details

- The objective of the Mystery Basket Challenge is to create an innovative dish for members of the judging panel to sample, then vote to determine the winning dish.
- Operators/marketing managers unfamiliar with the show *Chopped* can view highlights and past episodes at: <https://www.foodnetwork.com/shows/chopped>.

Process

1. The host will begin by introducing the chefs, including names and professional experience/training.
2. The chefs will open their baskets, and the host will reveal the ingredients that are available to the chefs. Chefs **MUST** use every ingredient in their baskets in the dish.
3. As the chefs prepare their dishes, the host will provide commentary and conversation with the audience. The host will also keep time so the event remains lively.
4. When time is elapsed, the chefs will plate tasting portions of their dish for the judges. The judges will sample the dishes and score them according to flavor, originality and presentation.
5. The host will compile the results and announce the winner. The host or chefs will draw for the door prizes and thank everyone for participating.



MYSTERY BASKET CHALLENGE

DUELING DISHES

WHO WILL MASTER THE MEAL?

COVID-19 SPECIFICATIONS

Should your university be running Dueling Dishes/setting up a Mystery Basket Challenge during the time of social distancing, please consider these adjustments to the activities. The safety recommendations in this guide are general suggestions. You need to follow all campus policies and state and local regulations to ensure the safety of customers and staff.

GENERAL:

- Only host your event in a space large enough to comply with social distancing guidelines (at least six feet apart)
- Limit audience in the dining hall – consider a livestream

PROCESS:

- Do not interview audience/judges to avoid close contact
- Hold a virtual raffle

PRIZES & GIVEAWAYS:

- Provide prizes for students to pick up on a nearby table, rather than having staff members or Interns stationed at each game to hand out prizes
- Consider prizes you might be able to provide virtually (e.g. loading extra meal credit onto students' accounts)